

PRODUCT INFORMATION PACKET

FASCO®

Model No: 9721

Catalog No: 9721

1/12 HP Refrigeration Motor, 1550 RPM, 115/208-230 Volts, 3.3" Diameter Diameter, OAO
Refrigeration Motors



Regal and Fasco are trademarks of Regal Beloit Corporation or one of its affiliated companies.
©2019 Regal Beloit Corporation, All Rights Reserved. MC017097E

REGAL



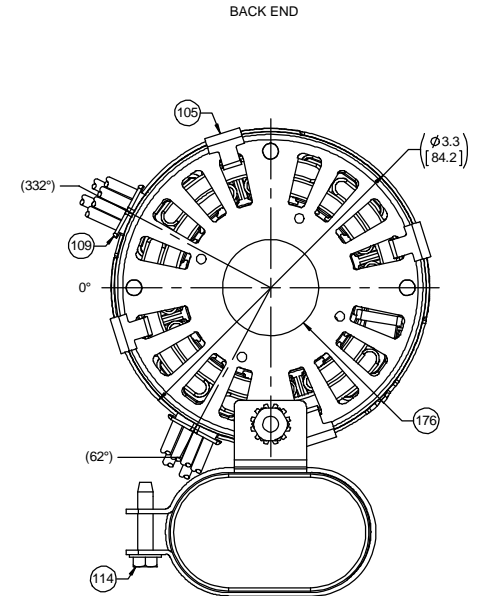
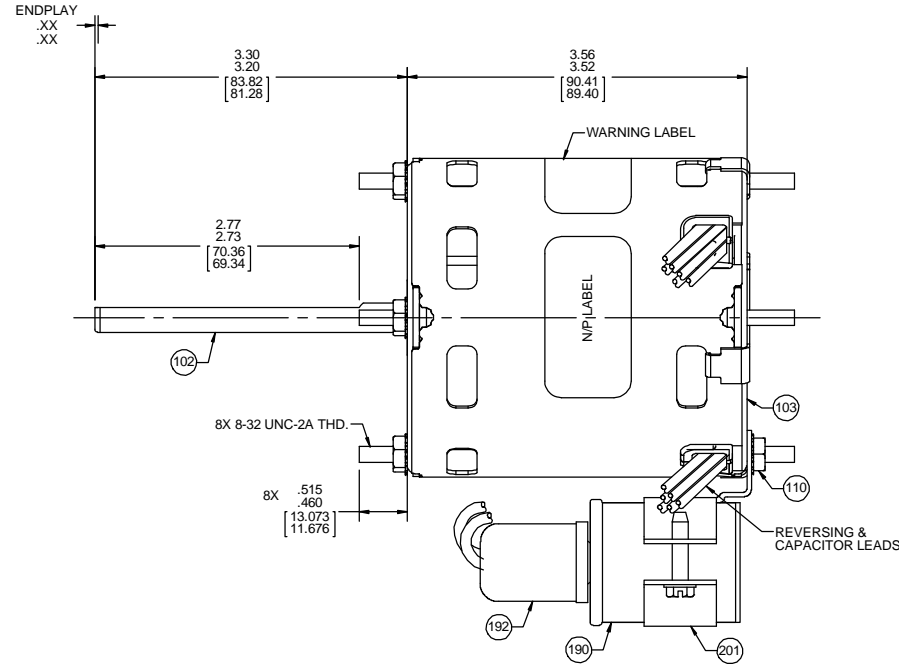
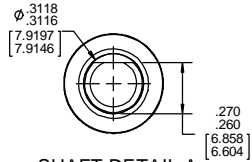
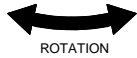
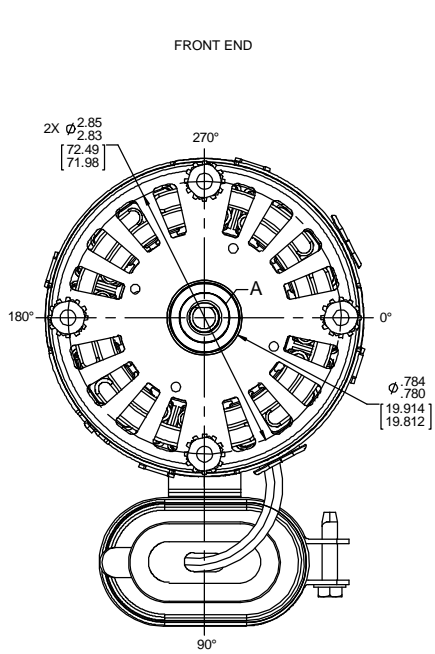
Nameplate Specifications

Output HP	1/12 Hp	Output KW	0.06 kW
Frequency	60 Hz	Voltage	115/208-230 V
Current	0.9/0.43/1.1/0.49 A	Speed	1350/1550 rpm
Service Factor	1	Phase	1
Duty	Air Over	Insulation Class	B
Frame	3.3	Enclosure	Open Air Over
Thermal Protection	Thermally Protected	Ambient Temperature	40 °C
UL	Recognized	CSA	N
CE	N		

Technical Specifications

Electrical Type	Permanent Split Capacitor	Starting Method	Across The Line
Poles	4	Rotation	Reversible
Mounting	Extended Studs	Drive End Bearing	Ball
Opp Drive End Bearing	Ball	Frame Material	Steel
Shaft Type	Flat	Overall Length	6.86 in
Frame Length	3.56 in	Shaft Diameter	0.312 in
Shaft Extension	3.25 in		

This is an uncontrolled document once printed or downloaded and is subject to change without notice. Date Created:29/10/2019

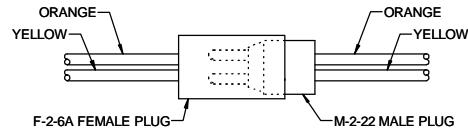


LEAD MATERIAL
 18 GA. 125°C. 2/64 INSUL.
 X-LINKED POLY.
 WHITE, BLACK, PURPLE, YELLOW, ORANGE
 22.00 / 20.00 [558.80 / 508.80]
 W / STRIP .56 / .44 [14.22 / 11.18]

CAPACITOR LEADS
 (2) BROWN, 8.00 / 6.00 [203.20 / 152.40]
 W / FLAG TERM. 89034045
 AMP 42742-2

GROUND LEAD
 GRN/YEL 22.00 / 20.00 [558.80 / 508.80]
 W / RING TERM. 89020157
 AMP 350436-2

REVERSING LEADS
 (2) ORANGE, (2) YELLOW
 6.00 / 3.00 [152.40 / 76.20]



TO REVERSE ROTATION MISMATCH COLORS
 MATCHING COLORS INDICATE C.W.L.E.
 MOTOR MUST HAVE C.W.L.E. WHEN SHIPPED

- NOTES:**
 1. MOTOR HAS 416 SS SHAFT.
 2. CONNECTION DIAGRAM LABEL TO BE ATTACHED TO WHITE LEAD, SEE SHEET 2 FOR LABEL REFERENCE.

CUSTOMER:	FASCO DIST.	APPLICATION:	HVAC								
CUSTOMER PN:	9721	MOTOR WEIGHT:									
	UP	ENVIRONMENT:	DRY								
HORIZONTAL	MOTOR TYPE		REFERENCE SAMPLE								
	B	LA	FR	A	S						
	00	90	30	V	05						
	TYPICAL PERFORMANCE AT 115 / 230 VOLTS 50 / 60 HZ		CAP: 4 MFD/370 VAC								
	IDLE		LOADED		LOCKED						
MOTOR SPEED	RPM	AMP	WATT	IN OZ	RPM	AMP	WATT	IN OZ	AMP	WATT	BREAK
115 / 50	1490	.80	49	46	1350	.90	86	17.3	1.7	180	61.2
230 / 50	1490	.30	51	44	1350	.43	85	17.9	.84	178	59
115 / 60	1792	.50	43	51	1550	1.1	109	19.3	1.7	172	55.5
230 / 60	1790	.26	47	49	1550	.49	107	17.8	.81	168	53

61305568

00464668

SAFETY WARNING
 This motor must be grounded in accordance with local or national electrical codes to prevent possible injury due to electrical shock.

AVERTISSEMENT DE SÉCURITÉ
 Ce moteur doit être fondée sur conformément à la réglementation locale ou national électrique codes pour prévenir d'éventuelles blessures en raison de choc électrique.

FASCO Fasco Industries, Inc. Motor Division

Assembled in Mexico No. 71903482 115/208-230 V

TYPE U90B1 50/60 Hz

T.P. AO Class B

Model 9721 Reference 1/12 HP 0.9/0.43/1.1/0.49 A Max Amb 40°C

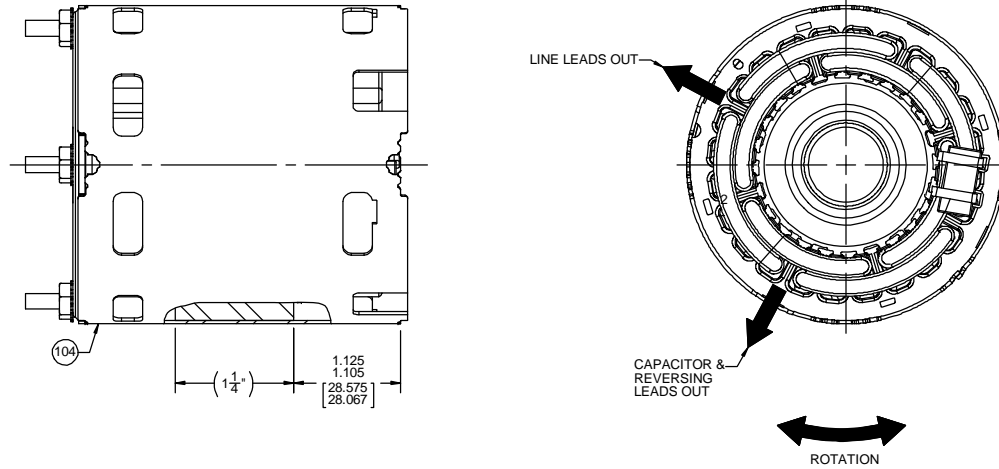
Sealed Ball Brq E40513 Reversible 1350/1550 RPM 4 MFD/ 370 VAC

DRAWING REVISION	REVISION BY	DATE	TOLERANCES UNLESS OTHERWISE SPECIFIED:	DRAWN BY	SED
GC	SED	2/9/2018	DEC. INCH mm ANGLE	SED	
ECO-0139375	APPROVED BY	DATE	.X ±0.1 [2.5] \$1°	9/10/2015	
ECO DESCRIPTION	SDM	2/9/2018	.XX ±0.01 [0.25]	APPROVED BY	PLA
ADDED PACK ASSY TO PACKING NOTES			.XXX ±0.005 [0.127]	DATE	9/10/2015
REMOVE BURRS & BREAK SHARP EDGES. 0.003/0.015 [0.076/381] X 45° CORNER FILLETS: R.02 [51]			.XXXX ±0.0005 [±0.0127]	REFERENCE	
PROPRIETARY AND CONFIDENTIAL INFORMATION. THIS DOCUMENT IS THE PROPERTY OF REGAL BELOIT AMERICA, INC. FORMERLY AND CONTAINING OWNERS PROPRIETARY INFORMATION. ANY PERSON, CORPORATION OR OTHER FIRM RECEIVING IT IS DEEMED TO HAVE ACCEPTED THE TERMS AND CONDITIONS OF THIS DOCUMENT. IT SHALL NOT BE DISCLOSED TO ANY PERSON, CORPORATION OR OTHER ENTITY, DUPLICATED, AND/OR USED, EXCEPT AS EXPRESSLY APPROVED IN WRITING IN ADVANCE BY OWNER. THIS DOCUMENT SHALL BE RETURNED TO OWNER UPON REQUEST. IT MAY BE SUBJECT TO CERTAIN RESTRICTIONS UNDER APPLICABLE EXPORT CONTROL LAWS AND REGULATIONS.			MACHINED SURFACES: 125 / 3.2 INCH/ mIN	DESCRIPTION	OUTLINE MOTOR ASSY
			THIRD ANGLE PROJECTION	MATERIAL	BLACK FINISH
			SIZE	DRAWING NUMBER	71903482
				SHEET	1 OF 2

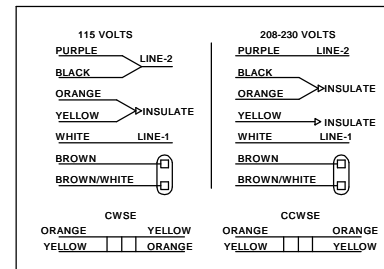
- NOTES:
1. STAKE STATOR TO MAIN FRAME PER 88830264.
 2. MAXIMUM TORQUE REQUIRED TO TURN MOTOR SHAFT IS 3/8 INCH-OUNCE.
 3. ASSEMBLE SPRING BETWEEN WASHER AND BEARING ON CLIP END, WITH SPRING FINGERS TOWARD BEARING.
 4. ASSEMBLE BALL BEARINGS TO BEARING RETAINERS PER 88834419.
 5. BRING LINE LEADS DIRECTLY OUT LEAD EXIT. IGNORE POSITION OF OTHER LEADS, THEY WILL ROTATE BACK TO THEIR LEAD EXIT.

FRONT END

BACK END



CONNECTION LABEL SHOWN FOLDED - TO BE CONNECTED TO WHITE LEAD (2.00 [50.80]) FROM LEAD EXIT



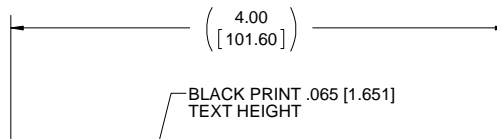
MEXICO PACKING SPECIFICATIONS

1. PACK PER 88834200. 1 PER CONTAINER, 28 CONTAINERS PER LAYER, 6 LAYERS 168 MOTORS MAX. PER PALLET. PACK ASSY: 87855320
2. PLACE (1) FLAT PAD ON PALLET, (1) BETWEEN EACH LAYER AND (1) ON TOP OF PALLET LOAD.
3. CARTONS MUST ALL FACE ONE DIRECTION TOWARD THE OPEN END OF THE PALLET. SEE 88834408.
4. APPLY DATE CODE LABEL TO SPACE PROVIDED ON CARTON BETWEEN THE BARCODE AND MANUFACTURING LOCATION. DATE CODE MUST MATCH THE DATE CODE ON THE MOTOR LABEL.

DRAWING REVISION GC	REVISION BY SED	DATE 2/9/2018	TOLERANCES UNLESS OTHERWISE SPECIFIED: DEC. INCH mm ANGLE .X ±0.1 [±2.5] ±1° .XX ±0.01 [±0.25] .XXX ±0.005 [±0.127] .XXXX ±0.0005 [±0.0127]	DRAWN BY SED	Regal Beloit America, Inc.
ECO ECO-0139375	APPROVED BY SDM	DATE 2/9/2018	REMOVE BURRS & BREAK SHARP EDGES: .003/.015 [0.076/.381] X 45° CORNER FILLETS: R.02 [.51] MACHINED SURFACES: .125 / 3.2 INCH/ mm SHOWN IN [BRACKETS]	DATE 9/10/2015	
ECO DESCRIPTION ADDED PACK ASSY TO PACKING NOTES COPYRIGHT REGAL BELOIT AMERICA, INC. ALL RIGHTS RESERVED. PROPRIETARY AND CONFIDENTIAL INFORMATION. THIS DOCUMENT IS THE PROPERTY OF REGAL BELOIT AMERICA, INC. FORMERLY AND CONTAINS OWNERS PROPRIETARY INFORMATION. ANY PERSON, CORPORATION OR OTHER FIRM RECEIVING IT IS DEEMED BY RECEIVING IT, TO AGREE THAT IT, AND/OR ANY PART OF IT, SHALL NOT BE DISCLOSED TO ANY PERSON, CORPORATION OR OTHER ENTITY, DUPLICATED, AND/OR USED, EXCEPT AS EXPRESSLY APPROVED IN WRITING IN ADVANCE BY OWNER. THIS DOCUMENT SHALL BE RETURNED TO OWNER UPON REQUEST. IT MAY BE SUBJECT TO CERTAIN RESTRICTIONS UNDER APPLICABLE EXPORT CONTROL LAWS AND REGULATIONS.			APPROVED BY PLA	DESCRIPTION OUTLINE MOTOR ASSY	PROCESS/FINISH BLACK PAINT
			REFERENCE	DATE 9/10/2015	MATERIAL
			THIRD ANGLE PROJECTION	SIZE C	DRAWING NUMBER 71903482
					SHEET 2 OF 2

NOTES:

- 1. KEEP WARNING LABEL PART AS CLOSE TO TOP AS POSSIBLE AND CONNECTION DIAGRAM AS CLOSE TO BOTTOM AS POSSIBLE.
- 2. MATERIAL: T/T IMPRINTABLE UL 2.0 MIL WHITE FLEXCON NEXGEN POLY WITH HIGHLY VISCOUS PERMANENT ADHESIVE AND A 50 LB. LINER.

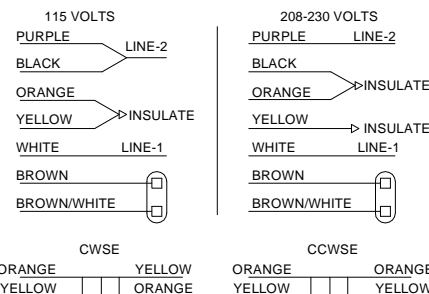
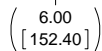


BLACK PRINT .065 [1.651]
TEXT HEIGHT

Warning: Hazardous voltage can cause severe or fatal injury. Motor must be installed and grounded per national electrical code and local code. Terminal cover must be in place for safe operation. This motor is equipped with an automatic reset thermal protector that will reset without warning. Disconnect power before servicing unit. Keep fingers and foreign objects away from openings and moving parts. Do not operate in an explosive atmosphere.

Precaución: Voltaje peligroso que puede causar lesiones severas o fatales. El motor debe ser instalado y aterrizado de acuerdo al código eléctrico nacional y local. La cubierta de las terminales debe estar en su lugar para una operación segura. Este motor está equipado con un restablecedor térmico automático, el cual se restablece sin ningún aviso. Desconecte la energía antes de dar servicio a la unidad. Mantenga los dedos y objetos extraños lejos de aperturas y partes en movimiento. No opere en una atmósfera explosiva.

Attention: Une tension dangereuse peut causer une blessure sévère ou fatale. Le moteur doit être installé et raccordé en respectant les codes électriques pays ou locaux en vigueur. Le boîtier électrique doit être en place pour un fonctionnement en toute sécurité. Ce moteur est équipé d'une protection thermique à réarmement automatique qui se réarme sans alarme. Débranchez l'alimentation avant tout entretien de l'unité. Tenez les doigts et tous objets étrangers loin des ouvertures et des pièces en mouvement. Ne pas faire fonctionner dans une atmosphère explosive.



2.75
[69.85]
MAX. PRINT AREA
BOTH ENDS

BLACK PRINT .08 [2.03]
TEXT HEIGHT

DRAWING REVISION AB	REVISION BY SED	DATE 2/1/2018	TOLERANCES UNLESS OTHERWISE SPECIFIED:	DRAWN BY SED	Regal Beloit America, Inc.
ECO ECO-0138783	APPROVED BY FDP	DATE 2/1/2018	DEC. INCH. mm ANGLE .X ±0.1 [+2.5] .XX ±0.01 [+0.25] .XXX ±0.005 [+0.127] .XXXX ±0.0005 [+0.0127]	DATE 1/2/2018	
ECO DESCRIPTION REVISED MATERIAL			REMOVE BURRS & BREAK SHARP EDGES: .003/.015 [0.076/.381] X 45 ° CORNER FILLETS: R.02 [51]	APPROVED BY SDM	DESCRIPTION LABEL-CONNECTION DIAGRAM
<small>COPYRIGHT REGAL BELOIT AMERICA, INC. ALL RIGHTS RESERVED. PROPRIETARY AND CONFIDENTIAL INFORMATION - THIS DOCUMENT IS THE PROPERTY OF REGAL BELOIT AMERICA, INC. (OWNER) AND CONTAINS OWNER'S PROPRIETARY INFORMATION. ANY PERSON, CORPORATION OR OTHER FIRM RECEIVING IT IS DEEMED, BY RECEIVING IT, TO AGREE THAT IT, AND/OR ANY PART OF IT, SHALL NOT BE DISCLOSED TO ANY PERSON, CORPORATION OR OTHER ENTITY, DUPLICATED, AND/OR USED, EXCEPT AS EXPRESSLY APPROVED IN WRITING IN ADVANCE BY OWNER. THIS DOCUMENT SHALL BE RETURNED TO OWNER UPON REQUEST. IT MAY BE SUBJECT TO CERTAIN RESTRICTIONS UNDER APPLICABLE EXPORT CONTROL LAWS AND REGULATIONS.</small>			MACHINED SURFACES: 125/ mm 3.2/ INCH	DATE 1/2/2018	MATERIAL
			mm SHOWN IN [BRACKETS]	REFERENCE	PROCESS/FINISH
				THIRD ANGLE PROJECTION	SIZE B
					DRAWING NUMBER 61305863
					SHEET 1 OF 1